

# Gainesville Animal Hospital

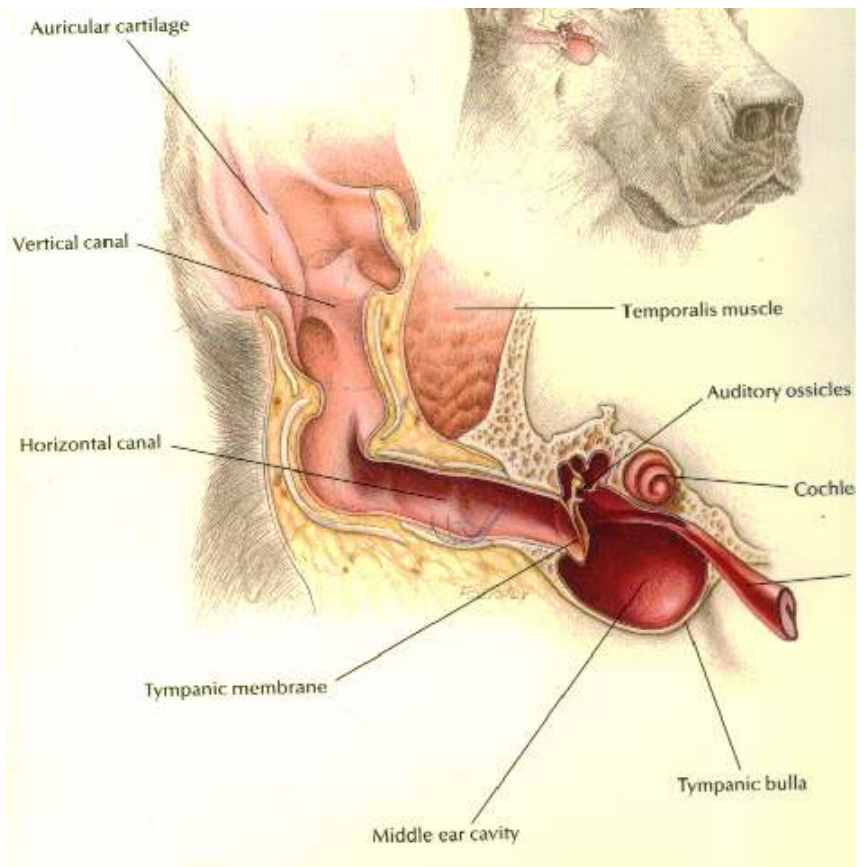
## How to Successfully Treat Your Pets Ears

In order for pets' ear problems to be successfully treated, ear medicine must travel all the way down the ear canal to the ear drum. However, this can be difficult because the natural response of pets to something being put into the ear canal when they are standing is to turn their head so the liquid will run away from their ear drum. This is opposite to what we want to have happen.

**First:** To get around these difficulties, lay your pet on his/her side. Pull the ear gently upwards and then place the medicine in the opening of the ear canal. Gravity will now allow the medicine to go all the way down to the ear drum.

**Second:** Sometimes it is thought that massaging the ear canal will work the medicine down into the ear canal. This is not true. Because your pet's ear canal is shaped like an "L," only **time** will allow the medicine to get all the way down. After you put the medicine into the ear canal, wait 15 to 60 seconds until you massage the base of the ear. The thicker the medicine the longer you will need to wait. It is never wrong to give it more time. For ointments that have the consistency of syrup wait 60 seconds. For solutions that have the consistency of water wait 15 seconds. If you have any questions, please ask the Doctor.

**Third:** For solutions, use five to seven drops for cats and dogs less than 15 pounds. For larger dogs use seven to ten drops. Only count complete drops. Partial drops occur when your pet wiggles. Many times these partial



drops do not make it all the way into the ear canal. Ointments can be more challenging to use than solutions. Put the tip of the dispensing bottle at the opening of the ear canal. Squeeze the bottle firmly. Stop squeezing when the medicine fills up the ear canal (almost touches the tip of the bottle). Don't worry about putting in too much medicine. Because of the thick nature of the medicine, the medicine will only fill up the very upper part of the ear canal. Remember to wait at least 60 seconds so the medicine will slowly go all the way down to the ear drum then massage the base of the ear. Your pet will usually shake their head afterwards. After they have shaken their head a few times, take a facial tissue and wipe out any excess.